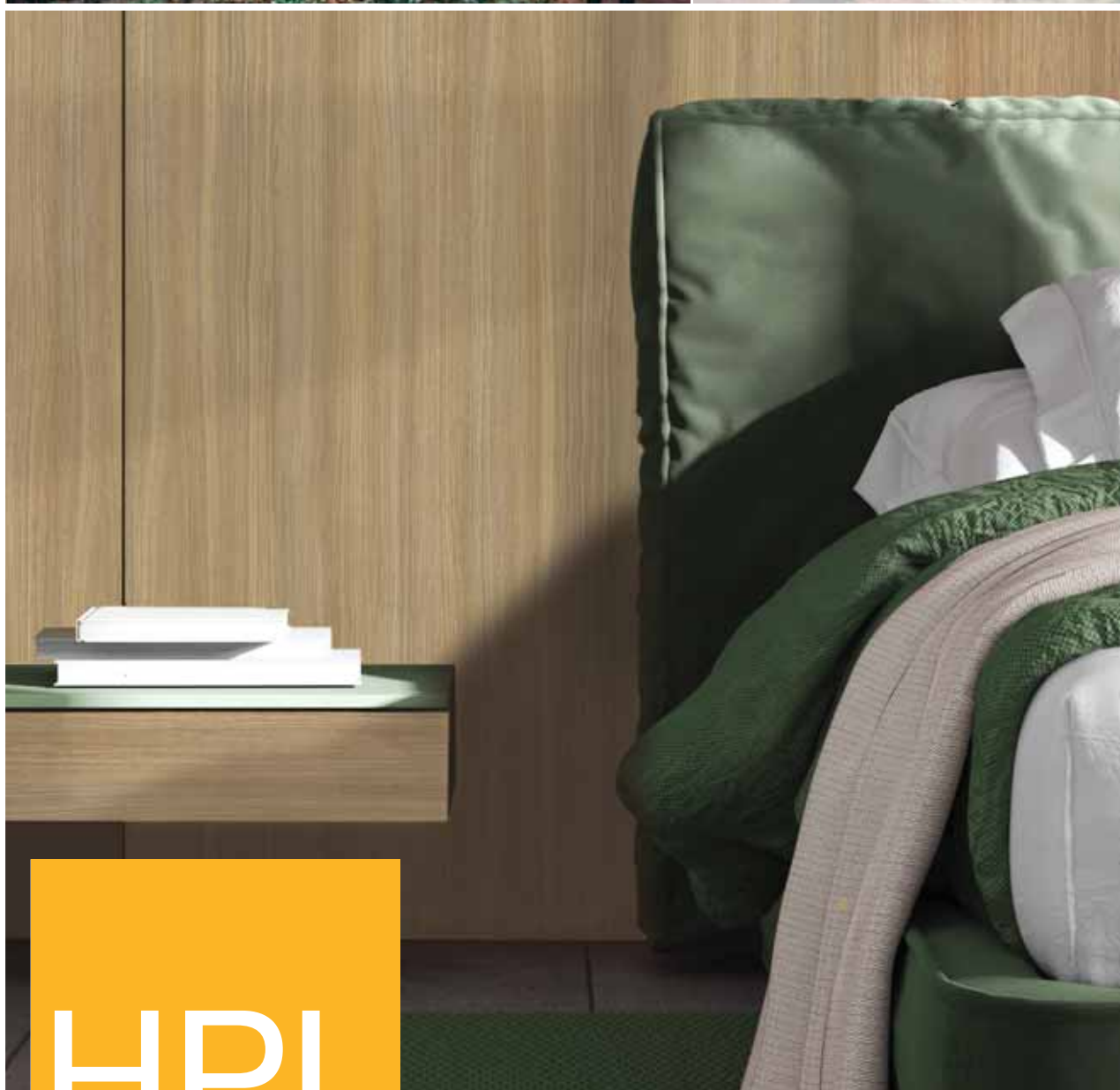




Introducing the new  
**Walk in  
the Woods**  
Collection



# HPL

High Pressure Laminates



**nevamar**®

A Panolam Surface Systems Brand.



INTRODUCING



## WALK IN THE WOODS

BY NEVAMAR®

### Walk in the Woods

A refined and modern collection of woodgrains and solids.

With sustainability in mind, Nevamar's Walk in the Woods was created with an awareness to select woodgrains that are neither exotic nor endangered, and indigenous to North America. The intent is not to promote or influence the use of endangered timber species.

For a sampling of our latest collection, contact your local Nevamar representative or visit [nevamar.com](http://nevamar.com).



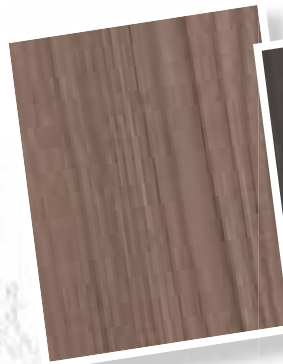
WO2600 NW **Aurora Oak**



WO9400 NW **Solstice Oak**



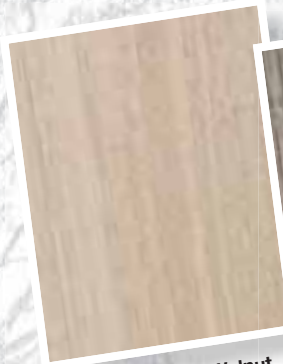
WO8800 NW **Twilight Oak**



WZ2200 IW **Sunrise Cedar**



WZ2150 IW **Midnight Cedar**



WW1300 NW **Pacific Walnut**



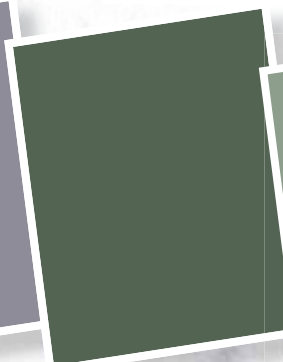
WW1900 NW **Continental Walnut**



WW1700 NW **Appalachian Walnut**



SP4200 T **Wild Liatris**



SV7700 T **Feral Fern**



SV7600 T **Flourish Green**



## Finish Options

Nevamar high pressure laminates are available in 25 finishes designed to enhance the look and texture of any project. Please contact your local Nevamar representative for finish samples, grade and sheet availability. For quicker processing of your sample request, kindly use the designated finish code as listed below.

**Aged Bark (AB)** Medium-grain weathered wood

**Armored Protection® (ARP) (T)** Low gloss, textured finish with ARP

**Ashwood (AW)** Fine woodgrain with cathedral

**Barnboard (BB)** Linear plank, matte woodgrain

**Crystal (CR)** Fine pebbled finish, medium gloss

**Evolution (EV)** Smooth surface enhanced by contrasting matte and gloss organic texture

**Fineline (FL)** Deep, fine-grained linear pattern

**Gloss (GL)** High gloss, smooth finish

**Granite (GR)** Polished stone textured finish

**Groovy (GV)** Eclectic abstract pattern that appears to create motion

**Hex (HX)** Geometric repeating pattern, low gloss

**Ironwood (IW)** Natural flowing wood texture, low gloss

**LineZ (LZ)** Deeply embossed woodgrain

**Medium Gloss (MG)** Medium gloss, smooth finish

**Metalz (MZ)** A high gloss metal look finish as the name implies

**Modern Matte\* (MM)** Velvet touch, fingerprint resistant, ultra matte

**Natural Stone (NS)** Matte surface accentuates the indentations offering a time-worn look

**Natural Wood (NW)** Real wood texture, low gloss

**Polished Velvet (PV)** Smooth, textured furniture finish

**Soft Leather (LR)** Finely grained leather finish

**Super Matte (SM)** Smooth, non-reflective surface

**Tactile Weave (TW)** Modern woven fabric look and feel, low gloss

**Textured / Suede (SD)** Low gloss, textured finish

**Timberline (TL)** Wide grained linear texture

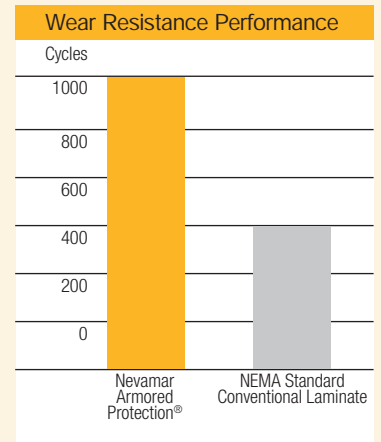
**Velvet (VE)** Smooth, finely grained surface

**Wood Essence (WE)** Natural, linear woodgrain finish

Upcharges may apply depending on the finish.

\*MM is a Specialty Finish

Armored Protection® laminates exclusively from Nevamar® provide more than 2X the wear protection of standard laminates, keeping your designs looking new longer. For unsurpassed resistance to abrasions and scuffs without sacrificing clarity of design, choose Nevamar laminates with Armored Protection (ARP) technology.



(Per ANSI/NEMA LD3 test method)

## Environmental Features

No matter which pattern you choose, Nevamar makes your laminate green!

- Nevamar's low emission products are GREENGUARD® certified.
- By formulating our own resins, we can assure you of an eco-conscious manufacturing process.
- Nevamar laminates are easy to clean without using harsh chemicals.
- Our products are manufactured with kraft and decorative paper from recycled or renewable sources to help preserve our forests and promote a healthier environment.
- Distribution centers are strategically located across the country to reduce the use of fossil fuels when delivering Nevamar products.
- Nevamar HPL surfaces do not support bacterial growth making them an ideal choice for healthcare, education and food service installations.

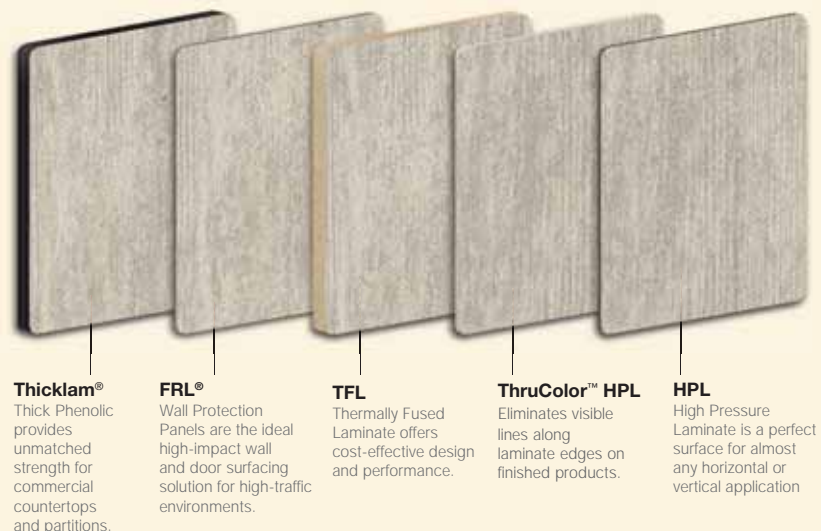


The mark of responsible forestry



## Multiple surfaces. One system. Amazing possibilities.

Nevamar continues its long-standing tradition of design and technical innovation featuring a broad selection of quality products. Today, our High Pressure Laminates (HPL) are more versatile than ever, with more design-forward patterns, accent colors, and finishes than ever before. Simply look at what we offer among our specialty laminates and you will know exactly what we mean.



**Thicklam®**  
Thick Phenolic provides unmatched strength for commercial countertops and partitions.

**FRL®**  
Wall Protection Panels are the ideal high-impact wall and door surfacing solution for high-traffic environments.

**TFL**  
Thermally Fused Laminate offers cost-effective design and performance.

**ThruColor™ HPL**  
Eliminates visible lines along laminate edges on finished products.

**HPL**  
High Pressure Laminate is a perfect surface for almost any horizontal or vertical application





nevamar®



ARMORED  
PROTECTION®  
Exclusively NEVAMAR

WM8340 T  
**Clear Maple**



W8351 T  
**Fine Sycamore**



WM5577 SD  
**Scandia Maple**



WM0005 T  
**Siren Maple**



WF0002 SD  
**Washington Apple**



WA0001 SD  
**Golden Anigre**



WM8342 T  
**Amber Pearwood**



WZ0005 MG  
**Recon Oak**



WZ0003 T  
**Tawny Satinwood**



WA0002 SD  
**Tangler Anigre**



WC5581 MG  
**Blossom Cherry**



W8352 VE  
**Regency Mahogany**



W8294 T  
**Crown Cherry**



WZ0017 T  
**Galloway Burl**



WS9450 MG  
**Royal Mahogany**



W8343 PV  
**Crest Mahogany**



WZ0001 T  
**Shibui Woodprint**



WZ0018 T  
**Natural Bamboo**



W00040 T  
**Straightaway Oak**



WM5528 SD  
**Vermont Maple**



WM8349 T  
**Champagne Sagawood**



WZ0002 T  
**Mikado Woodprint**



WC2001 T  
**Caluna Cherry**



WM8164 T  
**Rustic Quartered Oak**



W8371 T  
**Grand Isle Maple**



WM8350 T  
**Carmel Sagawood**



W8325 T  
**Sovereign Cherry**



WF0001 T  
**Edenwood**



W8369 T  
**Topaz Khayawood**



WM0013 MG  
**Vantage Point Walnut**



WZ2007 PV  
**Tendu**



WZ0028 PV  
**Kona Blend**



WM2640 T  
**Planetree Maple**



WZ0054 T  
**Breve**



WM8258 T  
**Beige Renaissance**



WZ2004 T  
**Kendo**



WZ0045 T  
**Validate We Do**



WX0075 AB  
**Galao**



WM0046 T  
**Illustrious Maple**



WZ2200 IW  
**Sunrise Cedar**



WH1000 WE  
**Glistening Trail**



WZ2001 T  
**Santa Rosa Plum Tree**



WZ2009 T  
**Cutting Edge**



WY2000 T  
**Miesian**



WM7800 T  
**Babbling Brook**



WU0060 T  
**Brave Spirit**



WM3100 T  
**Stout Walnut**



WK0023 PV  
**Marocchino**



WE2700 T  
**Meditation Elm**



WK0025 T  
**Chat**



WK0022 T  
**Antoccino**



WZ0062 T  
**Dragonfly**



WZ6001 T  
**Dry Creek Plum Tree**



WZ0052 T  
**Mazagran**



WZ0002 T  
**Caluna Cherry**



WZ0003 T  
**Tawny Satinwood**



WZ0005 MG  
**Recon Oak**



WZ0002 SD  
**Washington Apple**



WZ0003 T  
**Tawny Satinwood**



WZ0005 MG  
**Recon Oak**



WZ0002 SD  
**Washington Apple**



WZ0003 T  
**Tawny Satinwood**



WZ0005 MG  
**Recon Oak**



WZ0002 SD  
**Washington Apple**







WZ0080 TL <b>Zebrano White</b>	WW9000 WE <b>Sunbeam</b>	WW130 NW <b>Pacific Walnut</b>	WZ02600 NW <b>Aurora Oak</b>	WZ02600 NW <b>Solstice Oak</b>	WW1700 NW <b>Appalachian Walnut</b>	WP3000 AB <b>Weathered Storm</b>	WX8500 VE <b>Roaring Wind</b>	WW1900 NW <b>Continental Walnut</b>	WO8800 NW <b>Twilight Oak</b>	WZ0053 T <b>Zulu</b>	WZ0063 T <b>Yunnan</b>	WK0027 T <b>Bailey</b>	WH0050 PV <b>Rugged Trail</b>	WZ0055 T <b>Carajillo</b>	WM0047 T <b>Iconic Maple</b>	WT0003 PV <b>Valencia Teak</b>
WZ0049 T <b>Crema</b>	WA3000 VE <b>Tranquility</b>	WO7100 WE <b>Simplicity</b>	WU0030 WE <b>Kindred Spirit</b>	WU0010 WE <b>Outer Limits</b>	WT0005 T <b>Luminary Teak</b>	WP3000 AB <b>Weathered Storm</b>	WX8500 VE <b>Roaring Wind</b>	WW1900 NW <b>Continental Walnut</b>	WO8800 NW <b>Twilight Oak</b>	WZ0053 T <b>Zulu</b>	WZ0063 T <b>Yunnan</b>	WK0027 T <b>Bailey</b>	WH0050 PV <b>Rugged Trail</b>	WZ0055 T <b>Carajillo</b>	WM0047 T <b>Iconic Maple</b>	WT0003 PV <b>Valencia Teak</b>
S7024 T <b>Chalk White</b>	S7040 T <b>Spa White</b>	S7005 T <b>Antique White</b>	S2085 T <b>English Lace</b>	S7025 T <b>Neutra</b>	S2037 T <b>Almond</b>	S2110 T <b>Basic</b>	S2019 T <b>Beige</b>	S6024 T <b>Cordial Gray</b>	S2069 T <b>Bethany Beige</b>	S2093 T <b>Sandcastle</b>	S2086 T <b>Jute</b>	S2084 T <b>Foundry</b>	S2115 T <b>Cocoa Bean</b>	VS2002 T <b>Vanilla Bean</b>	S6014 T <b>Black Pearl</b>	
S7036 T <b>Precision White</b>	S7032 T <b>Bone White</b>	S7027 T <b>Smoky White</b>	S7004 T <b>Solid White</b>	S2063 T <b>Natural Beige</b>	S6052 T <b>String</b>	S6031 T <b>Fossil Gray</b>	S6003 T <b>Dove Gray</b>	S6047 T <b>Sandpiper</b>	S6037 T <b>Studio Gray</b>	SG0004 T <b>Garden Mist</b>	S6023 T <b>Platinum Gray</b>	S6012 T <b>Neutral Gray</b>	S6027 T <b>Maritime Gray</b>	S6020 T <b>Gunmetal</b>	S6054 T <b>Wrought Iron</b>	
S80300 T <b>Fiji</b>	S5059 T <b>Aqua Lagoon</b>	S3023 T <b>Graphite Blue</b>	S3022 T <b>Deep Blue</b>	S3016 T <b>Regimental Blue</b>	S3048 T <b>Patriot Blue</b>	S3068 T <b>Sunken Treasure</b>	S3070 T <b>Caribbean Blue</b>	S3069 T <b>Soft Island Breeze</b>	SP4200 T <b>Wild Liatris</b>	S3055 T <b>Violine</b>	SP4170 T <b>Tyrian Purple</b>	S6033 T <b>Raven</b>	S6001 T <b>Black</b>	S6053 SM <b>Jett Black</b>	S6053 T <b>Jett Black</b>	



[illegible]



AW1800 T White Kinetic	TO6001 T Gray Tranquility	VA2002 T Vision Vava	WZ0056 T Eiskaffe	RK7002 T Veto Proof	LN6001 T Frappe	AW1900 VE Spirito terrazo	MG1800 EV Galactic Dust	MW5900 EV White Perito Marble	MT4050 EV Taupe Imperiale Marble	HLT004 T Silverline Hautelink	LN6002 T Kopi Susu	AG8000 SD Silver Dollar	AM6001 T Aluminite	NXT002 T Stainless MetalX	VA6001 T Calm Distinction
MR7002 T Wild Oats Matrix	MR7001 T Studio White Matrix	MR6005 T Winter Gray Matrix	MR6008 T Birch Matrix	MR2006 T Straw Matrix	MR2003 T Neutra Matrix	MT2500 EV Man on the Moon	AG7900 EV Spanish Marble	AG8720 EV Smoky Skies	MG1600 EV Upland Stone	MR2002 T Greige Matrix	MR6001 T Gray Matrix	MR3003 T French Blue Matrix	MR6004 T Storm Gray Matrix	MR6007 T Phantom Gray Matrix	MR6002 T Charcoal Matrix
ES2001 T Ivory Essence	YSN002 T Pure Spun Yarn	WZ2000 T Ecrú	AT5100 T Blissful Path II	KH2001 T Marrakesh Express	FS2001 T Canyon Fissure	SL6003 EV Rare Earth Slate	AE0500 SD Stepping Stone	AT9960 EV Brown Corallino Marble	ME0600 SD Estasi	WZ0057 T Calypso	VE6001 T Veta Shadows	LD6001 T Black Lodestone	VS6001 T Vous Metal	HLT001 T Basic Black Hautelink	VA5002 T Easy Elegance
A7700 T Harmony Glow	TM2001 T Ochre tempera	YSN001 T Tea Stain Spun Yarn	PR2002 T Papier Au Lait	AL2002 T Golden Allusion	VS2001 T Vous Fawn	RK2001 T Classic Rock	LU6001 T Lunaria Shadow	LU3001 T Blue Lunaria	VA2001 T Visable Vava	RK6003 T Verdicts In	EM6001 T Aged Elements	FN6001 T Charcoal Fusion	ES6002 T Charcoal Essence	VU6001 T Adaptable Muse	ALN002 T Decadent Allusion

## Please note:

Printed patterns are shown at a reduced scale from representative segments of large sheets

Colors may differ slightly from the actual product  
Available for horizontal and vertical applications  
Ideal for retail, healthcare, education and other commercial applications

Available in all Nevamar finishes

Please contact Nevamar or your local distributor for samples before specifying

■ Denotes the new Walk in the Woods Collection





## How to Specify:

	EXAMPLE
Color Name	Galao
Color Reference Number	WX0075
Finish	Aged Bark (AB)
Size	3' x 8' or 3' x 10' 4' x 8' or 4' x 10' 5' x 8' or 5' x 10'

Learn more at  
**nevamar.com**

## Technical Specifications

Technical information listed below applies to high pressure decorative laminates. For additional technical data, specification sheets, and three-part CSI, visit [nevamar.com](https://nevamar.com).

### STANDARD LAMINATE

Nevamar Standard Laminate is designed for either horizontal, vertical, or postforming applications. Typical uses include countertops, tables, vanities, interior doors, cabinets, contract furniture, and retail store fixtures. Three standard grades of Nevamar laminate are suitable for most applications.

#### G48 General Purpose Grade

Nominal Thickness 0.048"/1.2 mm (NEMA HGS). Most often used in horizontal applications where high-impact resistance and a durable, decorative surface is required.

#### F39 Postforming Grade

Nominal Thickness 0.039"/1.0 mm (NEMA HGP). Designed for manufacturing countertops and other horizontal surfaces where the laminate may be heated and rolled over the substrate edge to eliminate seams.

#### F28 Postforming Grade

Nominal Thickness 0.028"/0.7 mm (NEMA VGP). Designed for surfaces where impact resistance is less critical.

### SPECIALTY PRODUCTS

#### ThruColor™ HPL Laminate

ThruColor HPL is intended for use in applications where the edge of laminate contributes to the aesthetics of the final product. Nevamar's manufacturing process provides a second generation color-through laminate that is more flexible and much less likely to chip than other color-through laminates. ThruColor HPL colors and their corresponding colors in standard Nevamar are not exact matches. Sample evaluation is recommended. Ideal for high-wear horizontal and vertical applications such as high-end furniture.

#### ChemGuard Chemical Resistant Laminate

Available in thicknesses up to 1" (25.4 mm). Nevamar ChemGuard incorporates the decorative features of high pressure laminate into a durable, chemical resistant surfacing material. The unique manufacturing process of Nevamar ChemGuard results in a product with excellent chemical resistant properties. This feature ensures that the ChemGuard surface is more chemical resistant than competitive laminate. Nevamar ChemGuard's superior chemical resistant surface cannot be softened with heat for postforming. ChemGuard is ideal for education labs, culinary testing facilities, photographic darkrooms, nurses stations, medical, dental, and veterinary work areas and mortuaries. Thicker ChemGuard laminate can be used as structural components in laboratory bench tops precluding the use of a substrate.

#### ThickLam® Thick Phenolic Core Laminate

Available in thickness up to 1" (25.4 mm). Designed for applications where the decorative surface must contribute to the structural stability of the finished assembly. ThickLam offers the same chemical resistance properties as standard Nevamar laminate. ThickLam thick phenolic can be manufactured with enhanced chemical resistance and is available with Class A Fire rating if requested. Available in the following configurations: decorative both sides and decorative one side. Available with black or brown edge. Typical uses include toilet and dressing room privacy partitions, tabletops, doors, workstations, wall panels, and desktops.

#### Fire Rated Laminate

Designed for applications where a decorative surface must resist combustion and inhibit smoke production. Fire rated laminate is classified by Underwriter's Laboratory, Inc. under File R6581 in both the US and in Canada. Please refer to Nevamar Fire Rated Technical Bulletin for products available as IMO certified. Typical uses include elevator cabs, hospitals, schools, airports, hotels, and other public buildings where strict fire codes apply.

#### Hi-Wear Laminate

Designed for applications requiring increased abrasion and scuff resistance, the product offers more than five times the wear resistance of standard grade laminate. Due to the manufacturing process, Nevamar Hi-Wear laminate will vary in color from corresponding colors in standard Nevamar. This effect is more pronounced in darker colors and patterns. Sample evaluation prior to order placement is recommended. Typical uses include buffet counters, salad bars, checkout counters, kickboards, bartops, and restaurant counters.

#### ESD (Electrostatic Dissipative Laminate)

Developed specifically for surfacing workstations where static-sensitive electronic components are manufactured and assembled. ESD is post-formable. Works well in hospitals, medical facilities, and clean rooms as the surface will not attract dust or dirt particles. Due to the unique composition of this product, SDL colors and their corresponding colors in standard Nevamar are not exact matches. Sample evaluation is recommended.



2 Corporate Drive, Suite 926, Shelton, CT 06484  
877.726.6526 [panolam.com](https://panolam.com)

© 2024 Panolam Industries International, Inc.